

# Carbonator with plastic bottoms G-480 Datasheet



## General information



### Technical description

ODL carbonators are designed to integrate seamlessly into water dispensing systems, transforming ordinary tap water into sparkling water.

This family has an upper and lower cover injection moulded in POM C and an external body in stainless steel. Their patented design guarantees a main structure with customizable height, inlet and outlet connections are made of plastic and positioned on the upper part. These carbonators are designed to also work immersed in water, taking care to keep enough distance between the maximum water level and the probes.

This family of carbonators is continuously subjected to life tests in the ODL laboratories, aimed at guaranteeing the quality of all the materials used.

This product family is certified by NSF International in accordance with NSF/ANSI 18.

### Features

All three fittings on top are swivel, the connection is made with a cartridge, straight fittings are also available.

It is possible to have one or two level probes plus the ground probe depending on the control you intend to use. The size of the probe fastons is 6x0.8x1.3.

Fixing system or brackets are available on request.

Two plastic non-return valves are present on water inlet lines, one on CO<sub>2</sub> line.

### Applications

Domestic	●	●	●
Ho.Re.Ca.	●	●	○
Post mix system	●	○	○
Large communities	◐	○	○

### Environment and operating conditions

Working fluid	H <sub>2</sub> O, CO <sub>2</sub>
Safety valve nominal pressure	8.5 or 11bar
Maximum operating pressure	7.5 or 9.5bar
Water inlet optimal temperature	1 to 5°C
Burst pressure*	>38bar
Proof pressure*	20bar
Ambient operational temperature	1 to 30°C
Ambient operational RH	Up to 80%
Storage temperature	Up to 50°C
The component is designed for continuous operation	
*These values are referred to Ø88.9mm.	

# Carbonator with plastic bottoms

## G-480 Datasheet



### Dimensions, volumes and connections

Table below collect all the data of this product family, for any informations about tolerances contact ODL.



<b>Working position</b>	Vertical													
<b>External diameter [mm]</b>	Ø88.9 and Ø63.5													
<b>Carbonator Length [mm]</b>	+20m of carbonator length													
<b>Carbonator Length [mm]</b>	120	131	146	160	175	195	200	210	228	255	300	326	350	
<b>Inner total volume [L]*</b>	0.54	0.60	0.69	0.77	0.86	0.98	1.01	1.07	1.18	1.34	1.60	1.76	1.90	
<b>Void weight [kg]*</b>	0.5	0.52	0.56	0.59	0.62	0.67	0.68	0.70	0.74	0.80	0.90	0.96	1.02	
<b>Water nozzle diameter [mm]</b>	1.0, 1.25, 1.5, special version in steel 0.8													
<b>Number of level probes [-]</b>	2 or 3 for Ø88.9, only 2 for Ø63.5													
<b>Short probe length [mm]</b>	Available probe length are 52, 55, 60, 63, 65, 70, 75, 80, 85, 90, 95, 100, 105, 112,													
<b>Long probe length [mm]</b>	130,160, 190, 280. In case of 3 probes the legth must be appropriately combined.													
<b>Water volume with 70mm probe [L]*</b>	0.26	0.33	0.42	0.50	0.59	0.71	0.74	0.80	0.91	1.07	1.33	1.49	1.63	
<b>Filling factor [-]*</b>	0.49	0.55	0.61	0.65	0.69	0.72	0.73	0.75	0.77	0.80	0.83	0.85	0.86	
<b>ØCO<sub>2</sub>, H<sub>2</sub>O and Soda</b>	Cartridge Ø4, Ø6, Ø8 and Ø1/4"													

\*These values are referred to Ø88.9mm.

ODL reserves the right to modify the characteristics of this sheet without prior notice and recommends contacting the technical office when you intend to use the product very close to the indicated limits. Copyright © of O.D.L. s.r.l.

# Carbonator with plastic bottoms

## G-480 Datasheet

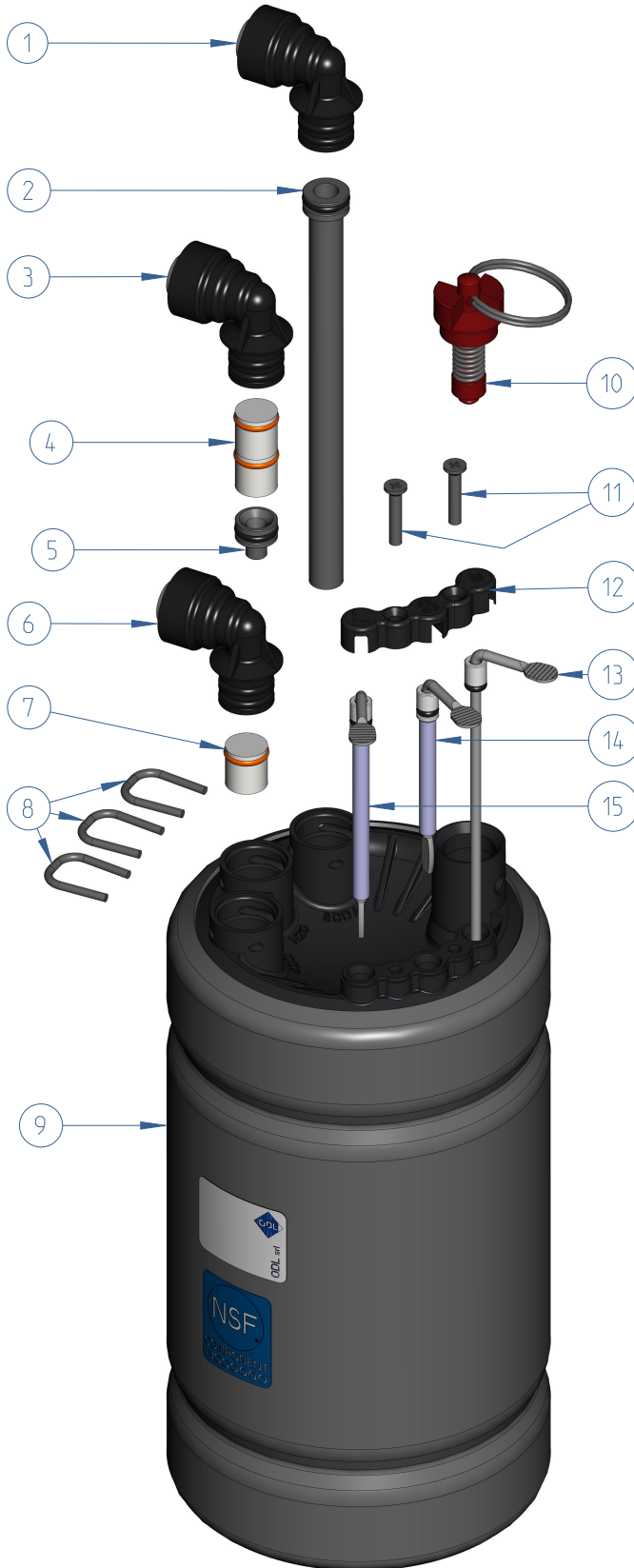


### Spare parts

All spare parts available are reported in the table under column "SP".

\*If the safety valve is replaced, it will be classified only as a purge valve, not a safety component.

The system must therefore incorporate an alternative safety valve.



ID	DESCRIPTION	SP	Q.ty
1	Soda outlet swivel fitting assembly	X	1
2	Soda withdrawl pipe	X	1
3	Water inlet swivel fitting assembly	X	1
4	Plastic non return valve for water	X	2
5	Water inlet nozzle	X	1
6	CO <sub>2</sub> inlet swivel fitting assembly	X	1
7	Plastic non return valve for CO <sub>2</sub>	X	1
8	Swivel fitting pin	X	3
9	Carbonator body		1
10	Safety valve	X*	1
11	Screw	X	1
12	Probe stopper	X	1
13	Ground level probe	X	1
14	Long level probe	X	1
15	Short level probe	X	1

# Carbonator with plastic bottoms

## G-480 Datasheet



### ***Indication for external cleaning and sanitization***

The information provided below is for guidance only. For complete details, please consult the product's Warnings and Instructions Manual.

Use only a clean, damp cloth and water for cleaning the exterior of the carbonator. Do not use any other cleaning agents or chemicals. ODL carbonator is delivered clean and has undergone industrial washing procedures, it is crucial to clean and sanitize the carbonator after installation and before its first use with food or beverages.

For internal sanitization, ODL recommends verifying the chemical compatibility of the chosen sanitizing fluid with the materials present in the carbonator. For guidance on the maximum temperatures and pressures to be used during sanitization, please contact ODL.

### ***Food standards and certifications***

This family of carbonators is compliant with these community and Italian legislation and their subsequent updates and changes and other international standards:

- Regulation (EC) No. 1935/2004,
- Regulation (EC) No. 2023/2006,
- EU Regulation 10/2011,
- D. M. 21/03/1973,
- Presidential Decree 777/82;
- Directive 2014/68/EU;
- NSF/ANSI 18.